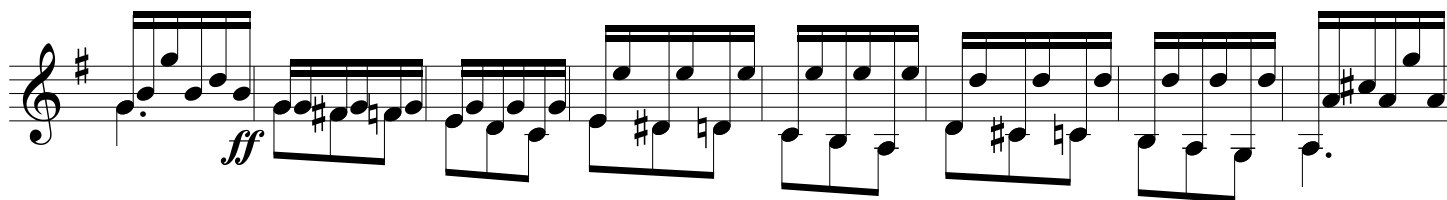
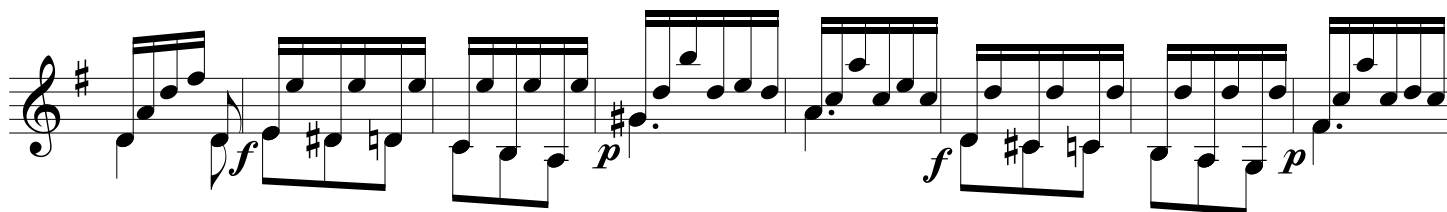
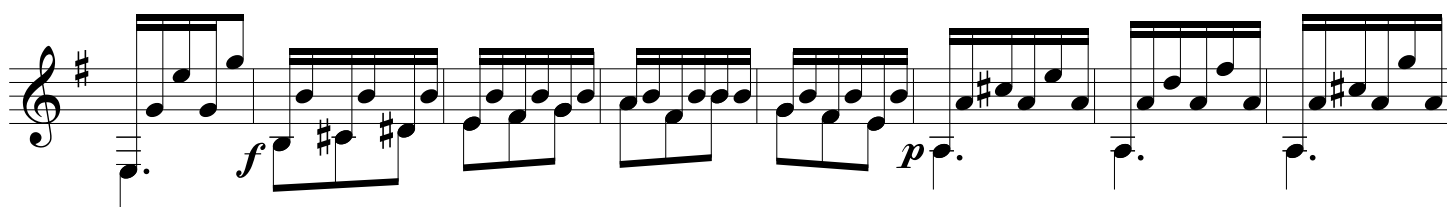
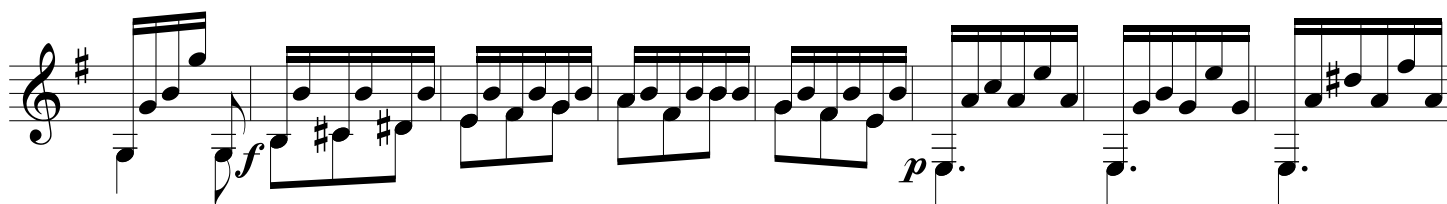
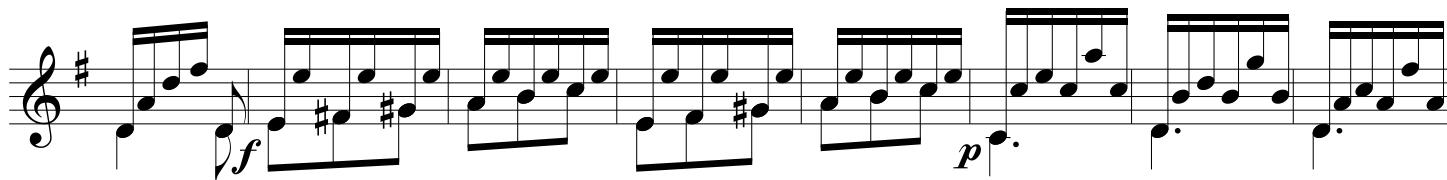
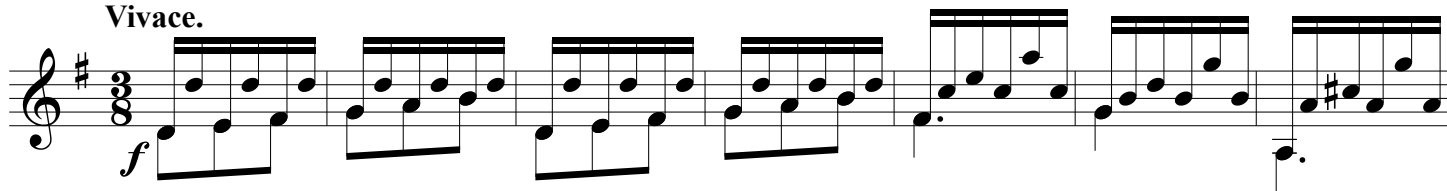


Carcassi, Op. 26, "6 Caprices" No.2

Vivace.



First musical staff in treble clef with a key signature of one sharp (F#). It begins with a dynamic marking of *f* (forte) and later transitions to *p* (piano). The notation features a series of eighth-note chords and single notes.

Second musical staff in treble clef with a key signature of one sharp (F#). It begins with a dynamic marking of *p* (piano) and continues with eighth-note chords and single notes.

Third musical staff in treble clef with a key signature of one sharp (F#). It begins with a dynamic marking of *pp* (pianissimo) and continues with eighth-note chords and single notes.

Fourth musical staff in treble clef with a key signature of one sharp (F#). It begins with a dynamic marking of *pp* (pianissimo) and continues with eighth-note chords and single notes.

Fifth musical staff in treble clef with a key signature of one sharp (F#). It concludes the piece with a final chord and a fermata over the final note.